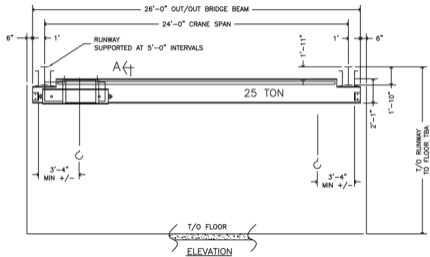
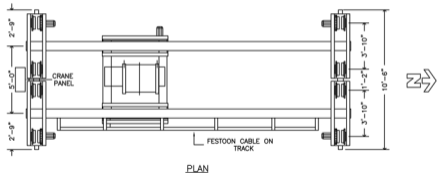


DATE	REVISION	NO.
-	-	-



Indoc Cranes has received another order Dec. 2010 To supply Canadas Mining Industry. During 2010 8 of this model cranes have been supplied to the Potash industry. Our cranes have proven themselves To be reliable, and durable operating in all Environments.



GENERAL SPECIFICATIONS	
CRANE CAPACITY	25 TONS
HOIST MAKE	MIZIA
HOIST MODEL	MT11963M
HOIST SPEED	10/3 FPM
TROLLEY SPEED	60/15 FPM
BRIDGE SPEED	80/20 FPM
POWER SUPPLY	575-3-60
TROLLEY WEIGHT	= 2800lbs
HOIST WEIGHT	= 3800 lbs
U/R CRANE WEIGHT	= 17,000 lbs
STANDARD MANUFACTURER	
SAFETY YELLOW ENAMEL	

Indoc Crane Service

PROJECT
25 TON URDG CRANE

CUSTOMER

DRAWN BY: NA DRAWING # OF: 1 1

DATE: REVISION: JOB #:

0